



# Plan 6 video class 7<sup>th</sup> grde

Míster Carlos Gallardo

# Contents



In this class we Will talk about comparative sentences:

1. What is it?
2. How do we use them?
3. How do we make them?

# Table of Contents

## Introduction

Explanation about what is it?

## Analysis

Check some examples about  
it and understand the applied  
rules

$$a^2 + b^2 = c^2$$

## Presentation

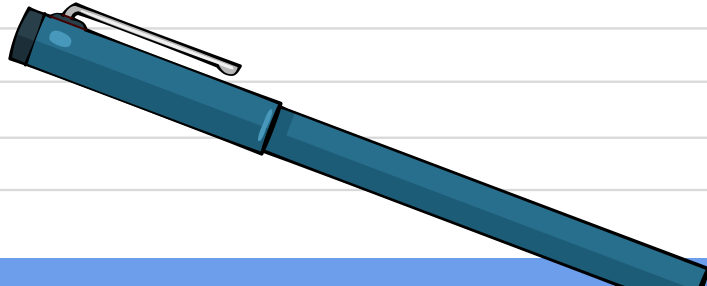
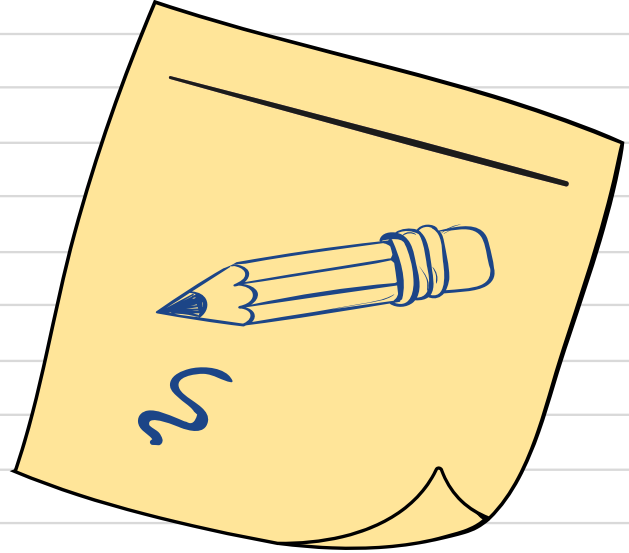
Check structures and rules


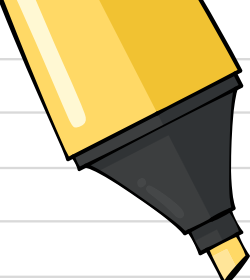
## Conclusion

Feedback about it and  
homework

# What is it?

This is one tipy of sentence,  
that is used to compare 2 or  
more things using and specific  
structures





“we have 4 main rules to create comparative sentences, and the most important things is that it depends on the number of syllables that the adjective has

## **-rules**



Let's  
analyze  
the  
rules

1 syllable

Add “ER” at the end of adjective.

**cheap** → cheaper

**fast** → faster

**large** → larger

**thin** → thinner

2 syllable ends in “Y”

Change “Y” for “I” and add er

**lucky** → luckier

**early** → earlier

**easy** → easier

**pretty** → prettier

2 or more sillables

In this case add “MORE” at the beginning

**more serious**  
**more often**

**more expensive**  
**more comfortable**

Irregular forms

**good/well** → better

**bad/badly** → worse

**far** → further (or farther)

Now we now how to write the adjectives properly but we still need to make the comparison, so in the sentence we must add the Word **THAN** after the comparison adjective

Person N°1



Comparative adjective

Person N°2

Comparative expression

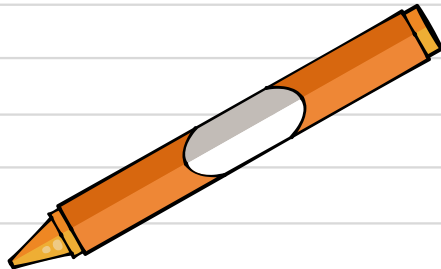
My fiend is uglier than me



# Let's check what we learned



Let's go



# COMPLETE THIS EXERCISES



Freg  
8 years  
Good ++  
beautiful +++



Frag  
10 years  
Good +++  
beautiful +

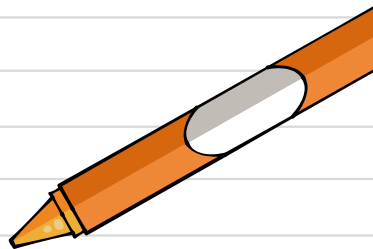


Frog  
7 years  
Good +  
beautiful ++

Freg is elder than frog (old)

Frag is better than frog (good)

Frog is More beautiful than frag (beautiful)



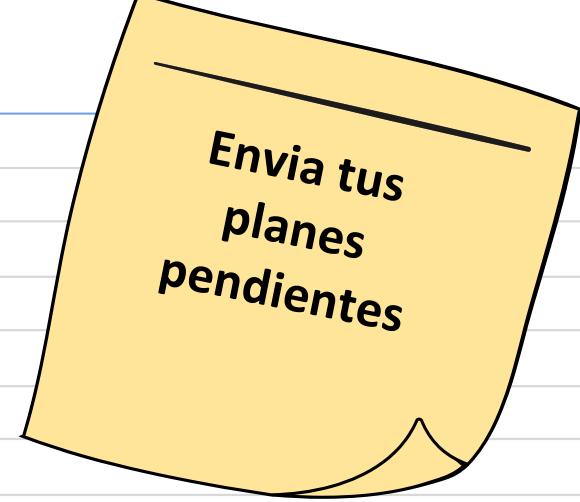




**Don't  
forget  
pending  
material**



# Que debo?



PLAN N°2 DIAGNOSTICO

PLAN N°3 QUESTIONARIO 1

<https://forms.office.com/r/1TwrXMaUZu>



PLAN N°4 QUESTIONARIO 2

<https://forms.office.com/r/DBUkza1apd>



PLAN N°6 QUESTIONARIO 3

<https://forms.office.com/r/hH0Ve9hUaM>

